

Yaesu FT-301D PB-1542B-R

Mechanical Designer:
WA7ZVY

Electrical Designer:
WA7ZVY

Checked by:
WA7ZVY

Date:
Aug. 12, 2013

Size:
A

Revision:
A03

Page:
1 of 2

DOC MECH

Scale:
1 : 1

PCB Fabrication Notes

- 1) PCB is two layers.
- 2). PCB thickness is 0.062" +/-0.005" (minus plating).
- 3). PCB material is FR4 or equivalent.
- 4). 1 ounce copper (minus plating).
- 5) For finished hole size and tolerance see Drill Table.
- 6). PCB finish is HASL, tin plate or gold.

5 Drill Table

Tool	Dia.	Type	Finished Tol.	Qty.
T1	0.041"	Plated	+/- 0.010"	23
T2	0.033"	Plated	+/- 0.005"	60
T3	0.125"	Plated	+/- 0.015"	3
T4	0.021"	Plated	+/- 0.005"	51

- 1) The Gerber package includes files for Inner Layer 1 and Inner Layer 2. These two inner layer files are not used to fabricate the PCB. Inner Layer 1 and Inner Layer 2 are implemented at build time as jumper wires. For electrical test, if done, Inner Layer 1 and Inner Layer 2 data must be accounted for to achieve a valid net continuity verification.

Yaesu FT-301D
PB-1542B-R

Mechanical Designer:
WA7ZVY

Electrical Designer:
WA7ZVY

Checked by:
WA7ZVY

Date:
Aug. 12, 2013

Size:
A

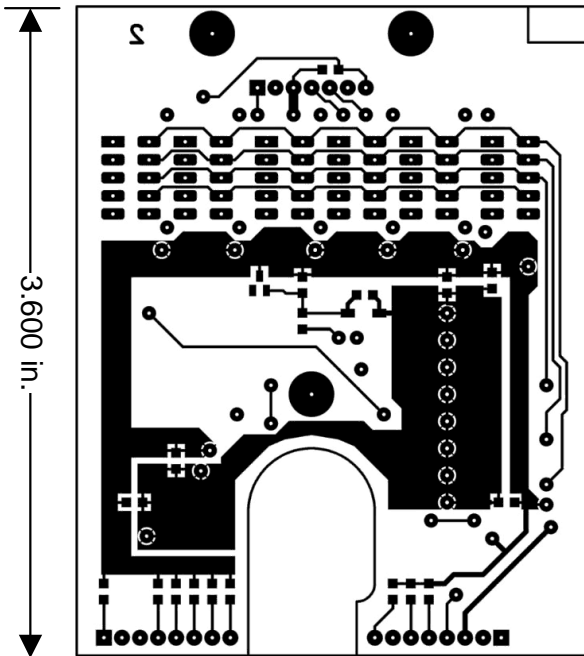
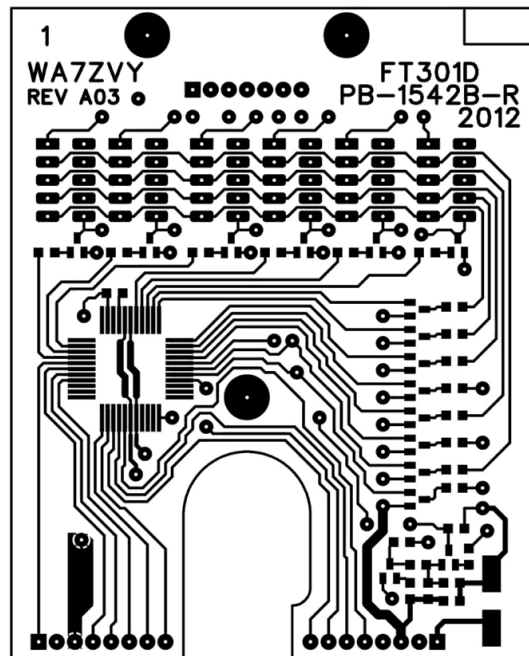
Revision:
A03

Page:
2 of 2

DOC MECH

Scale:
1 : 1

2.900 in.



3.600 in.