

PCB Fabrication Notes (Prototype)

- 1). PCB is two layers.
- 2). PCB thickness is 0.062" +/-0.005" (minus plating).
- 3). PCB material is FR4 or equivalent.
- 4). 0.5 ounce copper (minus plating).
- 5) For finished hole size and tolerance see Drill Table.
- 6) Ignore cutout (4X). Prototype board is rectangular 5.550" x 2.900".
- 7). PCB finish is HASL or tin plate.

5 Drill Table

Tool	Dia.	Type	Finished Tol.	Qty.
T1	0.040"	Plated	+/- 0.010"	130
T2	0.120"	Plated	+/- 0.015"	4
T3	0.028"	Plated	+/- 0.005"	8
T4	0.100"	Plated	+/- 0.015"	2
T5	0.045"	Plated	+/- 0.010"	35
T6	0.063"	Plated	+/- 0.010"	6
T7	0.125"	Plated	+/- 0.015"	6
T8	0.021"	Plated	+/- 0.005"	38

RASPY - Radio And Sound Port Yoke

Electrical Designer:

WA7ZVY

PCB Designer:

WA7ZVY

Checked By:

WA7ZVY

Date:

Jun. 20, 2009

Size:

A

Revision:

A01

OUTLINE

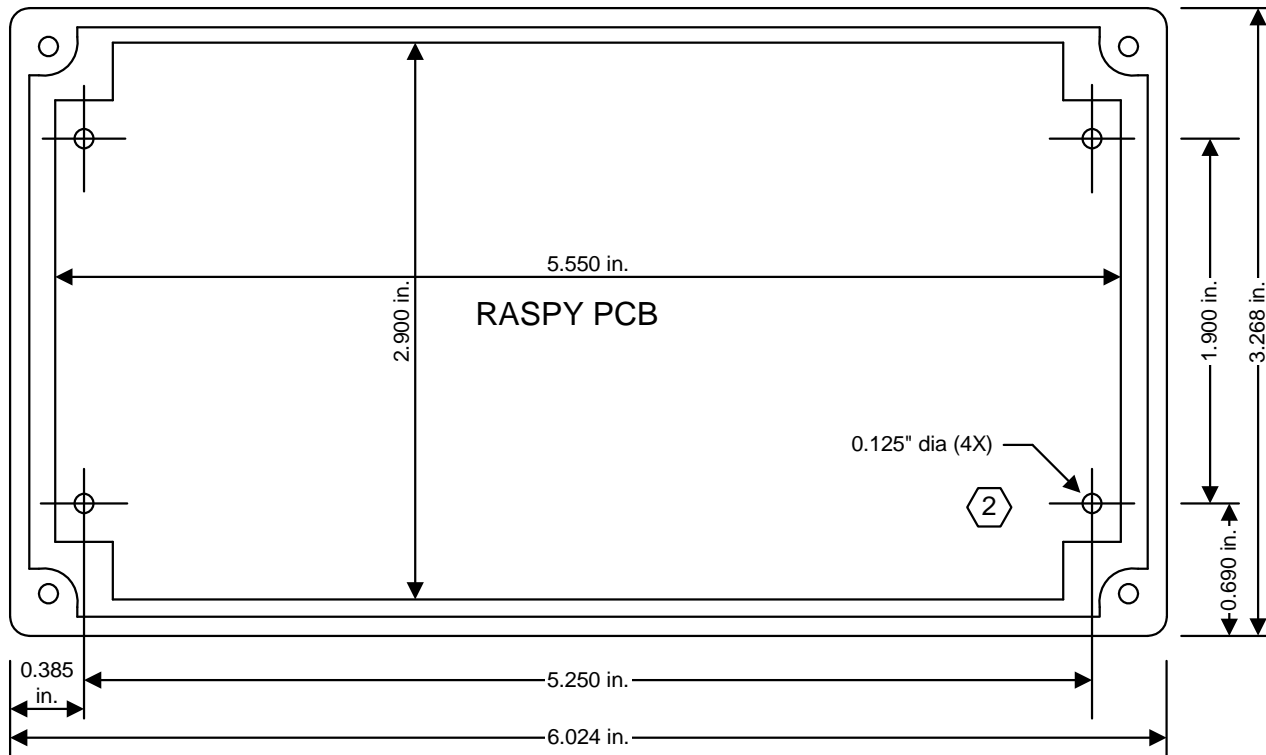
FAB NOTES
(Proto)

Cabinet Fabrication Notes (Prototype)

- 1). Hammond Manufacturing 1590P1
Die-Cast Aluminum Enclosure
6.024" L x 3.268" W x 1.988" H
Digi-Key PN = HM348-ND

- 2

 RASPY PCB mounts in cabinet with
four 4-40 x 0.625" pan head screws and
twelve 4-40 hex nuts.
Screw : Digi-Key PN = H706-ND
Hex nut : Digi-Key PN = H724-ND



RASPY - Radio And Sound Port Yoke

Electrical Designer:

WA7ZVY

PCB Designer:

WA7ZVY

Checked By:

WA7ZVY

Date:

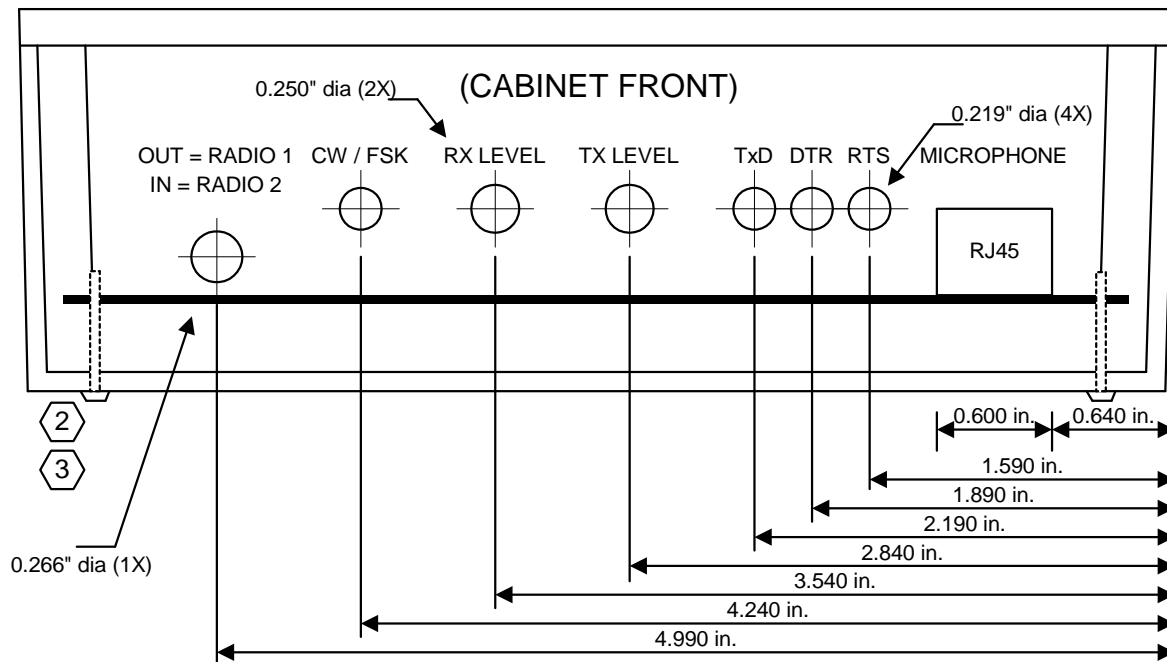
Jun. 20, 2009

Size:

A

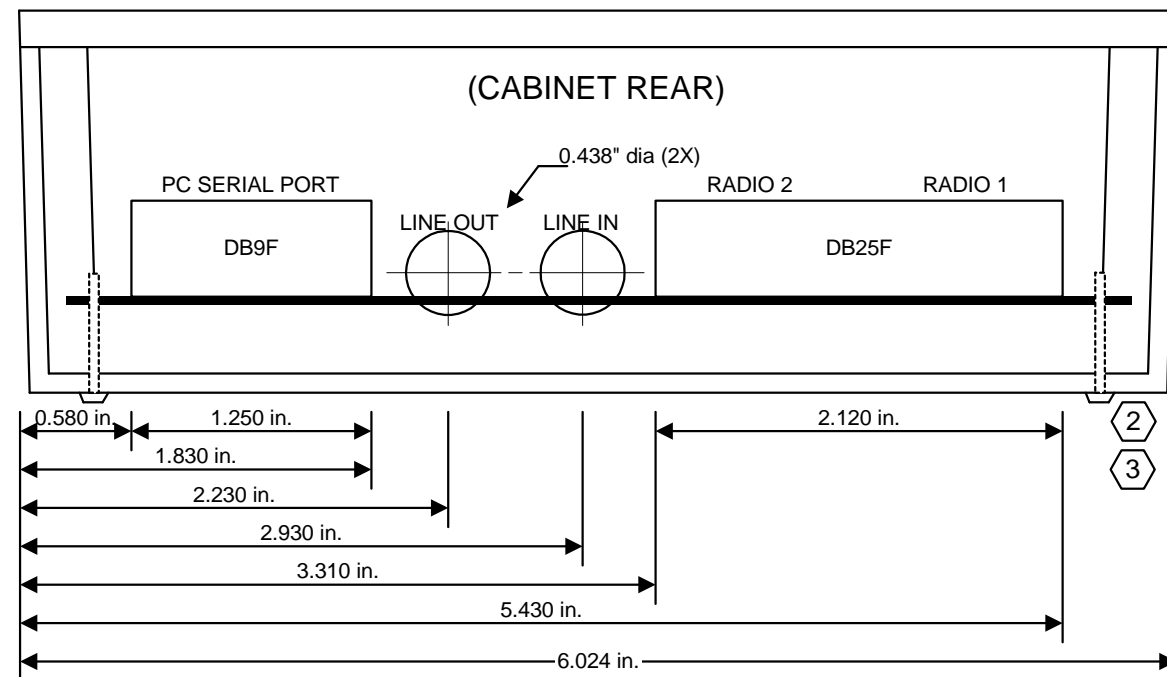
Revision:

A01



Cabinet Fabrication Notes (Prototype)

- 2 RASPY PCB mounts in cabinet with four 4-40 x 0.625" pan head screws and twelve 4-40 hex nuts.
Screw : Digi-Key PN = H706-ND
Hex nut : Digi-Key PN = H724-ND
- 3 Place four Bumpons^(TM) feet on cabinet bottom.
Digi-Key PN = SJ5745-0-ND



RASPY - Radio And Sound Port Yoke

Electrical Designer:

WA7ZVY

PCB Designer:

WA7ZVY

Checked By:

WA7ZVY

Date:

Jun. 20, 2009

Size:

A

Revision:

A01

RADIO 1
(OUT)

RADIO 2
(IN)

OFF

CW KEY
MODE

RX

LEVEL

TX

TXD DTR RTS

MIC

AFSK
MODES

-- RASPY -- Radio And Sound Port Yoke

--- PC ---
SERIAL
PORT

--- PC SOUND ---

TO
LINE IN

FROM
LINE OUT

--- RADIO INTERFACE ---

RADIO 2

RADIO 1