

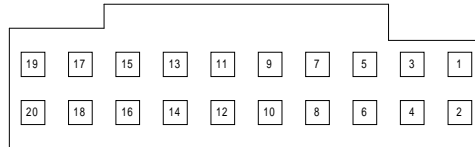
# W7VTW-1 PACKET RADIO NETWORK NODE MOTOROLA CDM750 to TNC-200 WIRING

Date: 20050207.1

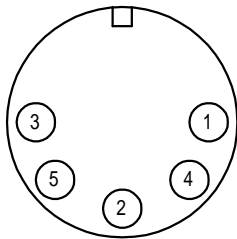
By: WA7ZVY

TNC-200 5 Pin DIN Connector	Signal Name	Wire Color	Motorola CDM750 20 Pin Accessory Connector
1	XMIT AUDIO	GREEN	4
2	GND	SHIELD/BLACK	9
3	PTT	RED	5
4	RECV AUDIO	BROWN	13
5	SQUELCH INPUT	(Not Used)	-

Accessory Connector  
(Looking into the rear of the radio, heatsink fins facing up)



TNC-200 DIN Connector  
(Looking into back side of cable connector)

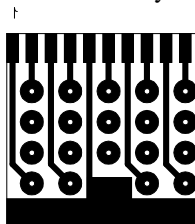


- 1 - Transmit Audio
- 2 - GROUND
- 3 - Push-to-Talk
- 4 - Receive Audio
- 5 - Squelch Input(Optional)

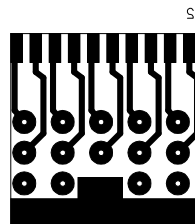
- 1 - ?
- 2 - ?
- 3 - External Speaker Negative
- 4 - Microphone Audio 80mV RMS @ 3KHz Deviation
- 5 - Microphone PTT
- 6 - Programmable (Defaults to External Alarm Output 0.25 Amps Max.)
- 7 - Flat Transmit Audio 150mV RMS @ 3KHz Deviation
- 8 - Programmable
- 9 - Ground
- 10 - Programmable
- 11 - Emergency Alert Input
- 12 - Ignition Control Input
- 13 - Discriminator Audio Output 350mV RMS @ 3KHz Deviation
- 14 - Programmable
- 15 - Switched A+ Sense 0.5Amps Max
- 16 - Programmable
- 17 - Internal Speaker Positive
- 18 - External Speaker Positive
- 19 - ?
- 20 - ?

Rev. 20050202.1 WA7ZVY

Accessory Connector Paddle Board



Mirror Image of  
Top Surface



Mirror Image of  
Bottom Surface